

## THE PROJECT

A newly constructed estate in Jupiter, FL featured beautifully sourced travertine coping and tile throughout the pool area and outdoor deck. The client expressed concerns about the surface finish—specifically the DCOF (Dynamic Coefficient of Friction) slip resistance—given that small children and frequent guests would be enjoying the new space. They needed a solution that would improve safety without compromising the natural beauty of the stone.

## SPECIAL REQUIREMENTS

- Evenly etch the surface without damaging the aesthetics of the premium travertine.
- Increase the DCOF of the factory-hone finish to create a safer, more slip-resistant environment.
- Provide long-lasting results with minimal maintenance requirements.

## THE STAIN-PROOF® SOLUTION

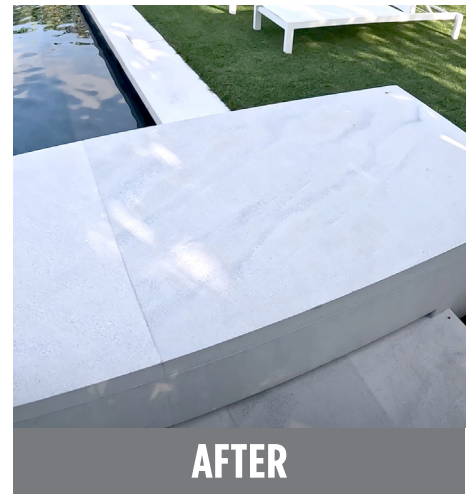
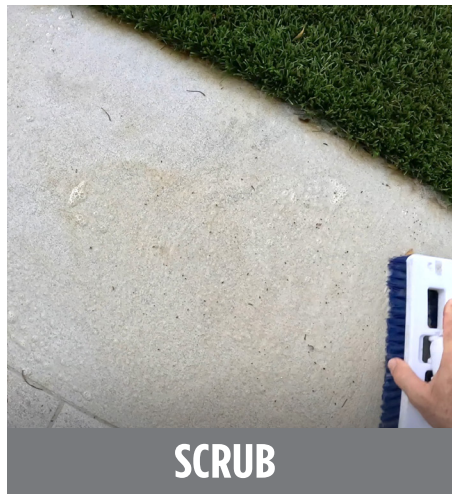
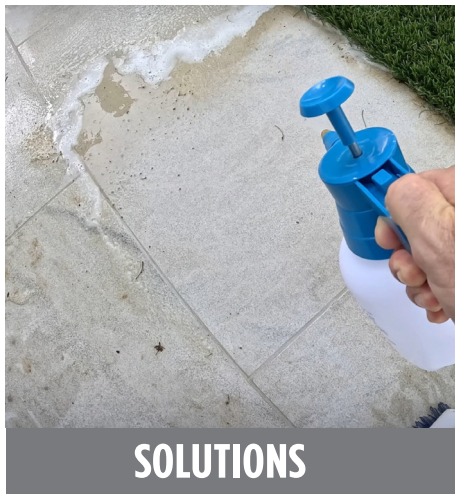
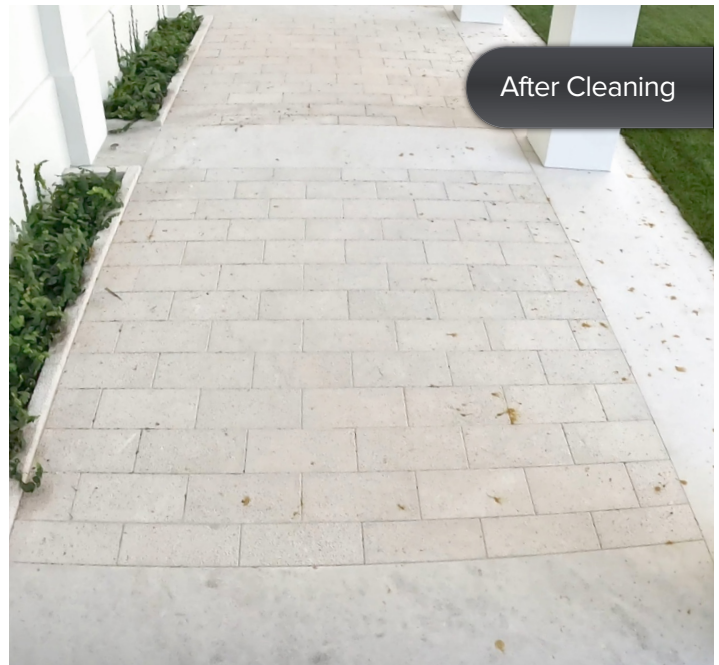
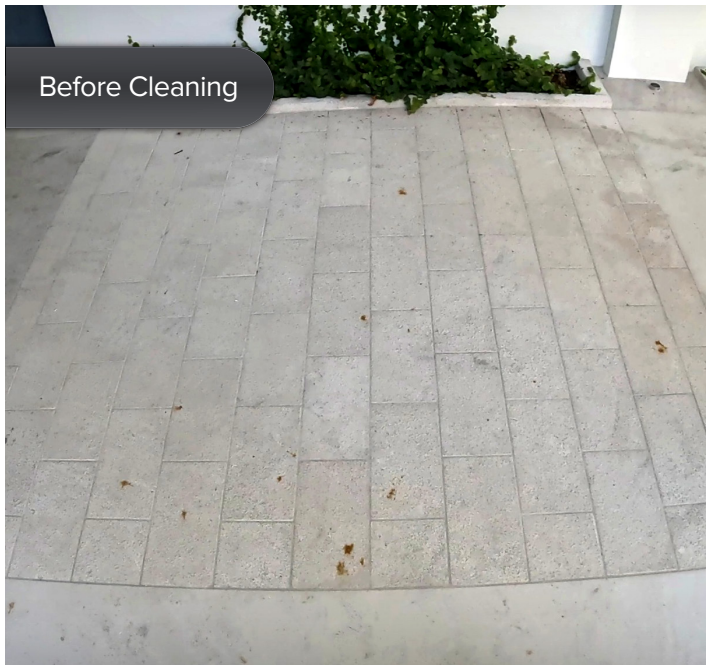
The Accredited Applicator, Estrella Polishers, assessed the property and identified additional challenges, including tree tannin stains on nearby Vetter Stone Silver Shadow Limestone. To restore and protect the stone surfaces, they used Stain-Proof® Peroxide Cleaner, a pH-balanced, ready-to-use formula ideal for organic stain removal. The cleaner effectively lifted the tannin discoloration while preserving the stone's character.



## THE STAIN-PROOF® SOLUTION CONT.

Following cleaning, the surfaces were treated with Stain-Proof® Premium Impregnating Sealer to provide long-term protection, reduce ongoing maintenance, and maintain the elegant finish of the estate. Unlike traditional sealers that require annual reapplication, Premium Impregnating Sealer delivers deep, long-lasting repellency—ensuring the travertine and limestone remain beautiful for years.

The applicator delivered an efficient and reliable solution to the client's concerns, improving safety, enhancing appearance, and simplifying future upkeep. A customized maintenance guide was also provided to the estate staff to support proper long-term care.



JUNE 2025

150 Dascomb Rd, Andover, MA 01810 • USA • 1866 667 5119  
67 Assembly Drive Tullamarine, Vic, 3043 • Australia • 1800 675 119

[www.stain-proof.com](http://www.stain-proof.com) | [info@drytreat.com](mailto:info@drytreat.com) | Stain-Proof, a division of ICP. Rev. 2.11.25

